



## Where great ideas get to work

Powerful, professional, and accurate. The SketchUp Pro desktop app offers fast and intuitive 3D modeling for anything you can imagine.



## The most popular 3D modeler

Use SketchUp Pro from conceptual design through to final project delivery. Create constructible models, comprehensive documentation, and estimate costs and schedules.



### Intuitive 3D Modeler

Easy-to-use drawing tools are combined with the accuracy and detail needed to produce professional-grade models, images and documentation.



### A flexible platform

Enhance your workflow with SketchUp extensions. Install apps for analysis, rendering, estimating, 3D printing, productivity, and more.



### Interoperability & BIM

Import/export many 3D, 2D and BIM files (including DWG and IFC); enabling smooth collaboration across disparate teams and design phases.



### Constructible models

Virtual design and construction enables problem solving and cost estimation for projects of any scale; whether it is an office chair or an office block.



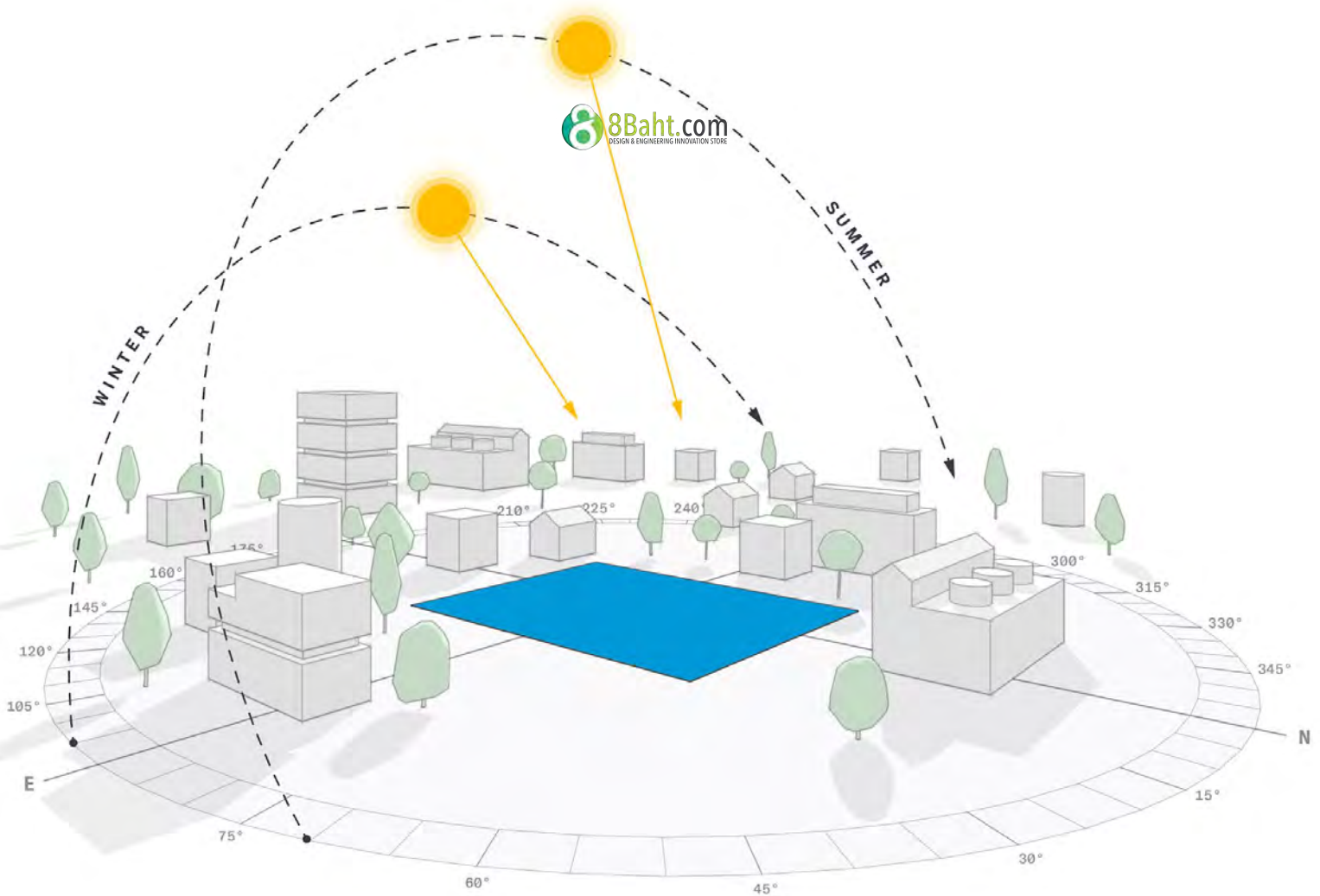
### Showcase your design

SketchUp Pro includes LayOut, a powerful 2D illustration app for the creation of drawing sets, construction documentation, and on-screen presentations.



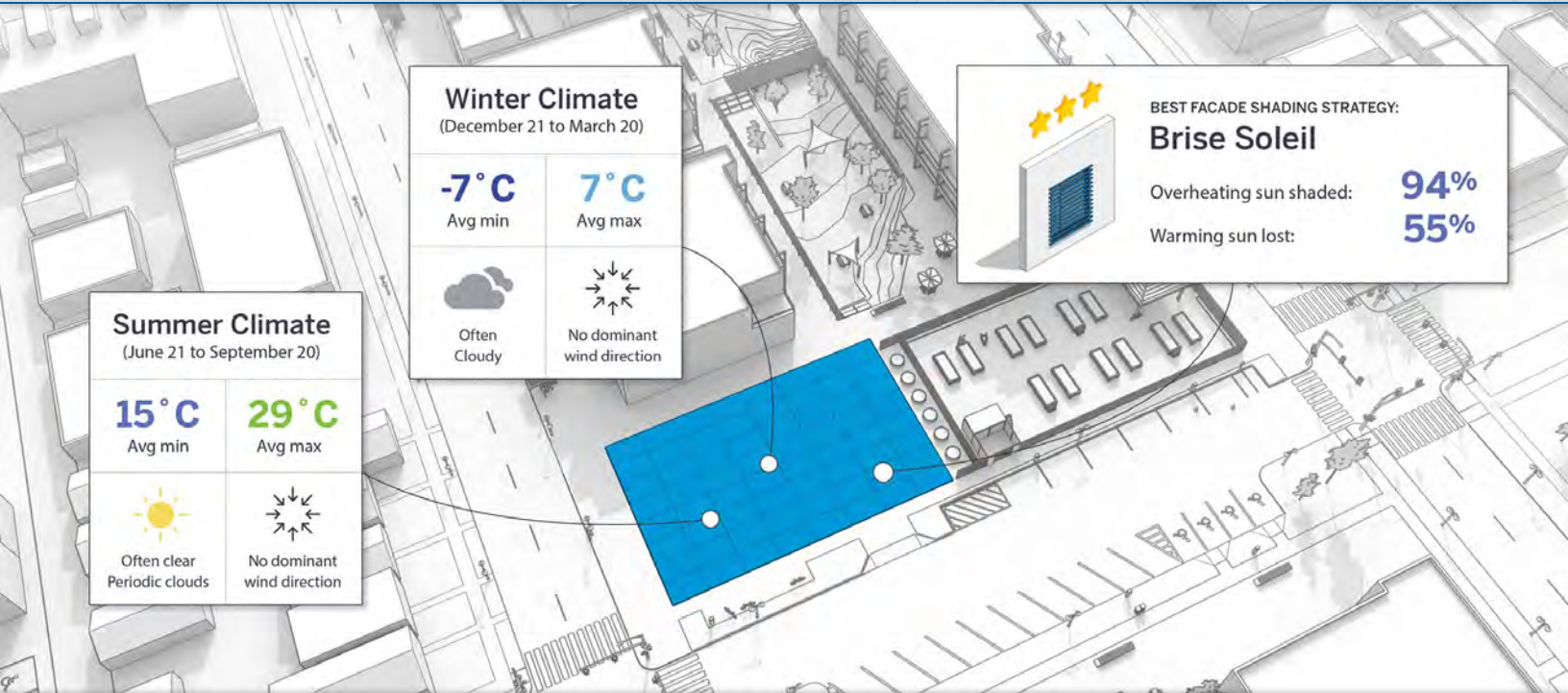
### Geolocation & context

Tell the full story by geolocating your model and adding real-world context, such as terrain data, sun position, and satellite imagery.



## Quick insights for design research

Get intelligent insights for design research before you start in 3D. Get design recommendations based on weather and building type.



## Climate insights for better design

Connect the dots between climate and concept design at the start of your project. Present compelling graphics to clients and steer your projects in the right direction.

### Seasons

Capture your site's seasons, sky, and predominant wind conditions in a compelling snapshot.

### Architectural Response

Understand the climate's impact - predominant winds, overheating and more - on your architectural design.

### Shading & Glazing

Understand which shading solutions are best for keeping glare and excess heat out of your project.

### Daylighting

Shortlist the best glazing options for getting good daylight into your building.

### Top Lighting

Get clear guidance on the suitability of a wide range of top lighting options.

### Outside Spaces

Discover the strategies and features you need to make outside space more usable.



**sefaira** Energy & Daylight

Upload to Sefaira

Open Daylighting Visualization

Entity Palette ⚠ Check Entities

Analysis Update Analysis

Office in New York, NY, USA

Properties

Total Floor Area 54,266 ft<sup>2</sup>

47 kBTU/ft<sup>2</sup>/yr

EQUIPMENT DOMINATED

MOSTLY OVERLIT

Gains & Losses Guidance

Impact on Heating Impact on Cooling

Infiltration

Wall Conduction

South Solar

Glazing Conduction

West Solar

North Solar

Roof Conduction

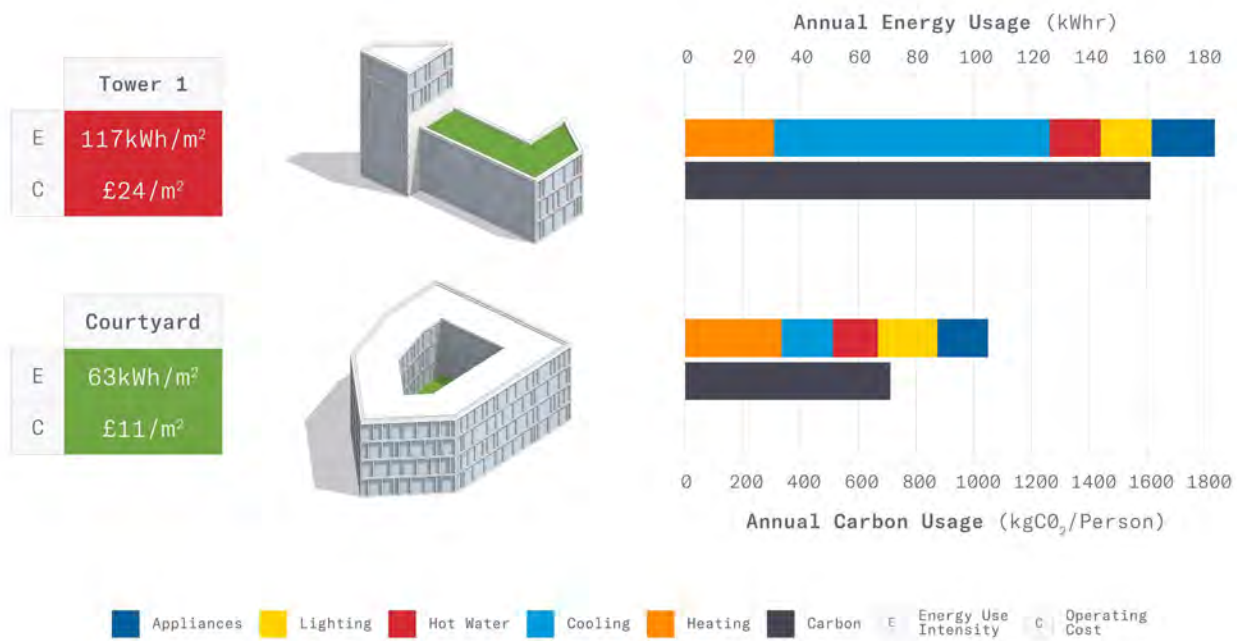
East Solar

Floor Conduction

Include active gains and losses

## Empowering sustainable design

Bring insightful building performance simulations to the conceptual design phase. Generate results powered by industry-accredited analysis engines within minutes.



## For better building performance

Analyze building performance during conceptual and schematic design phases. Inform during early design, when changes are easier, less expensive, and much more impactful.

### Fast, powerful analysis

Powered by industry-standard Energy+ (USDoE), Radiance, and DaySim analysis engines, Sefaira provides credible data to inform your design direction.

### HVAC sizing

Explore strategies for the reduction of heating and cooling peak loads to help lower the upfront and ongoing costs of HVAC.

### Iterate and refine

Compare massings, layout and envelope options to visualize the impact of passive design strategies on energy consumption.

### Daylighting

Interrogate glazing and façade options to reduce energy use. Visualize daylight to mitigate against glare and optimize use of natural light.

### Thermal comfort

See how thermal comfort is impacted by envelope and HVAC factors. Provide an optimal experience for future building occupants.

### Detailed reports

Share your project and use compelling visual outputs to showcase the performance benefits of your design to project stakeholders.



## Generate stunning, high-quality renders

From detailed high-rise buildings to interior floor plans, add realism into your projects using V-Ray 5 for SketchUp.



## For stunning, high-quality renders

Create compelling imagery to present your design story, remove ambiguity, showcase proposal merits to clients, and win more work.



### World-class rendering

V-Ray's powerful raytracing engine gives you access to your own virtual digital camera. Create and export professional photorealistic images.



### Real-time viewer

Access interactive, real-time visualizations as you model. Make edits on the fly, and significantly shorten project timelines with V-Ray Vision.



### Lighting

Simulate natural or artificial light to create the right exterior atmosphere and interior ambiance. Add atmospheric depth, fog, and light scattering.



### Ready-to-use materials

Simulate realistic materials and textures to add depth and character to your scenes. Access high fidelity, render-ready 3D objects via Chaos Cosmos.



### Animations & VR

Render and export complex animations, fly-throughs, and 360° panoramas for virtual reality viewing with your clients and project teams.



### Rapid cloud rendering

Leverage cloud rendering to speed up your workflow and free up your machine for other design work. No hardware configuration required.





## Unlock the power of point cloud data

Import, view, and transform scan data into an invaluable 3D asset by directly modeling on to point clouds using SketchUp's native tools.



## Unlock the power of point cloud data

Increase workflow efficiency by easily accessing, viewing and creating 3D assets from terrestrial scans, photogrammetry, lidar sensors, mobile mapping, and drone captures.



### Import multiple formats

Import a wide range of point cloud data formats from terrestrial scans, mobile mapping, photogrammetry, lidar sensors, and drone captures.



### Quick, accurate modeling

From scan to 3D in moments. Model directly onto your point cloud data using SketchUp's range of native tools and snap to points for accuracy.



### Refine attributes

Tweak point cloud visual attributes, such as point size, opacity, density, colorization by scan device, heat map intensity, and height contour mapping.



### Document with ease

Export and document point cloud data in 2D using the new Scan Essentials to LayOut integration. Annotate and share crucial project data with ease.



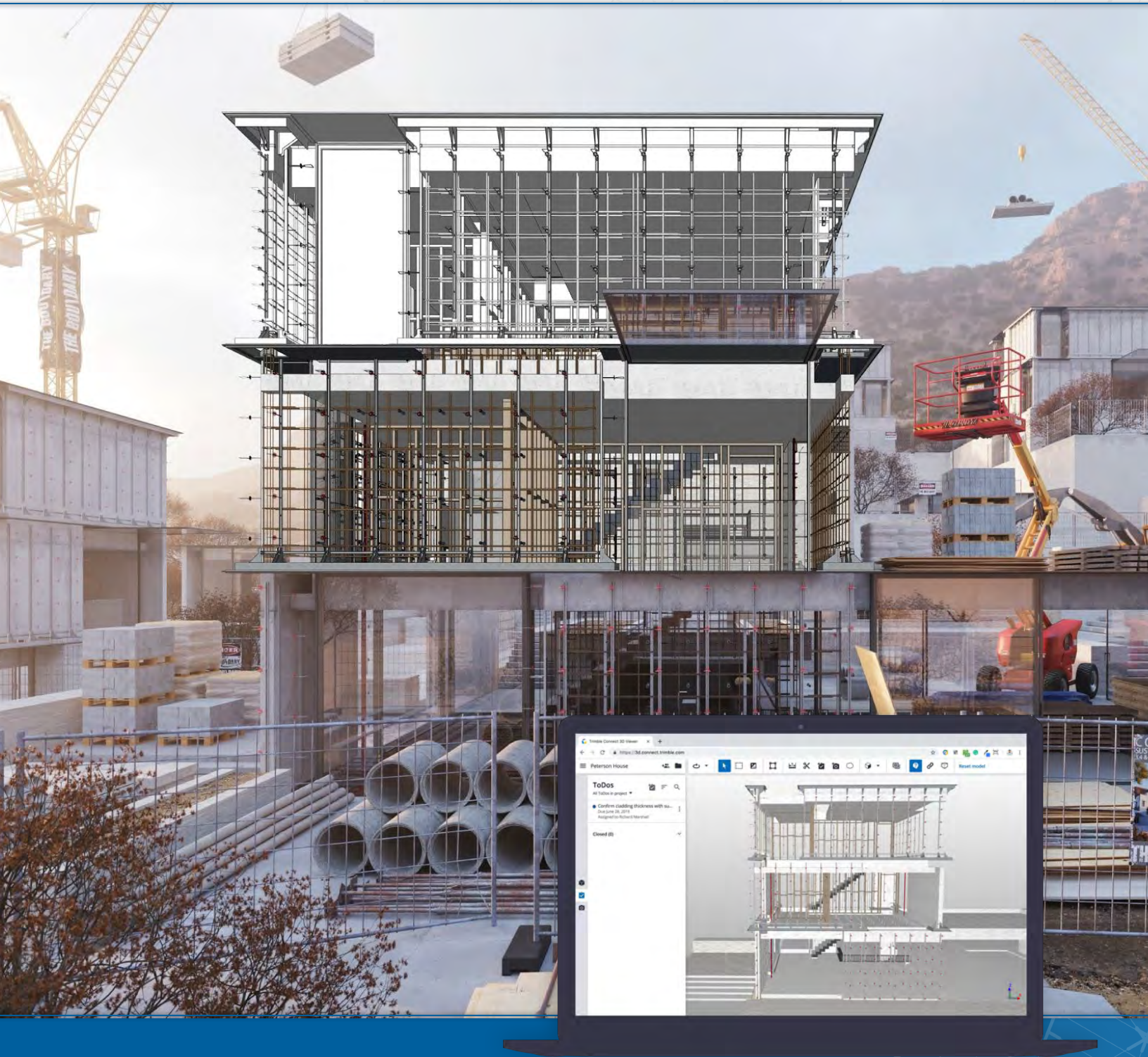
### Choose what you see

Leverage Clipping Box, Section Views and Cloud View Options to hide or display sections of your point cloud, and tell a concise, specific story.



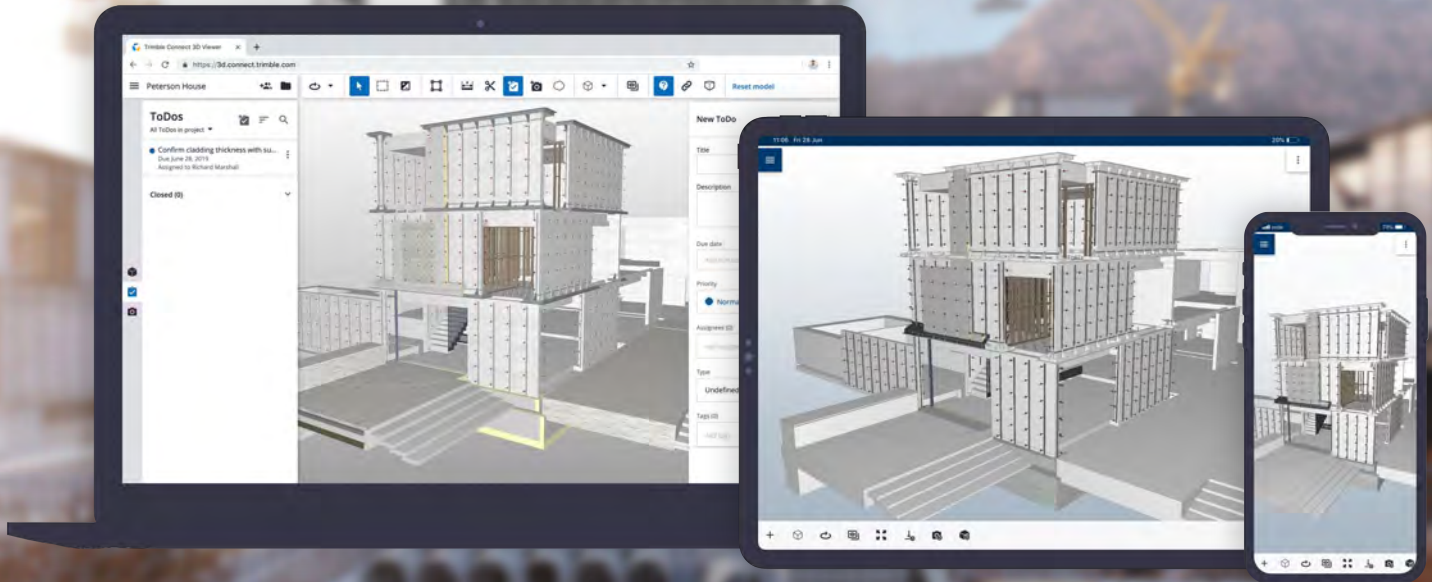
### Inspect with ease

Leverage the Inspection Tool to identify any missed or inaccurate details, and ensure the accuracy of your 3D model.



## Build on schedule, build on budget

Trimble Connect is a cloud-based platform that connects the right people to the right constructible data, at the right time.



## Collaborate anywhere

Real-time, construction-ready project information: view, review, action and reference 3D models, drawings and all the data you need for a successful construction project.

### Bridge data silos

Store, link and view data throughout each phase of the building's lifecycle to keep your project on schedule and on budget.

### Access anywhere

Up-to-date models and plans are accessible across desktop, browser, mobile (iOS and Android apps), and even on Mixed Reality (MR) devices.

### True collaboration

Compile feedback, assign to-dos, and share critical information at every stage. Access over 60 file formats including AutoCAD and Revit.

### Unlimited Storage

Trimble Connect for Business offers secure and unlimited cloud storage with full version control. Even if you lose your device, you won't lose your work.

### Robust data security

Infrastructure is built on the Amazon Web Services (AWS) platform, a secure environment offering the highest standards of physical and cyber protection.

### Advanced permissions

Get granular with permissions by assigning specific access rights for collaborators, and track project history and progress with admin-only tools.



## Orbit on the move

SketchUp Viewer for Mobile gives you the power to view and share your portfolio on iOS and Android devices. Take advantage of Augmented Reality to place objects in a real-world setting.



### 3D on the go

Keep your portfolio in your pocket. With SketchUp Viewer for Mobile, you can access and showcase your files from any iOS or Android device.



### Intuitive navigation

Show your work off from the best angles using multi-touch gestures and editable section planes. Access key data, such as areas and volumes, with Entity Info.



### Visualize in place

Place 3D models within a real-world environment on compatible Augmented Reality devices - ARKit (iOS) or ARCore (Android).



### Flexible storage

Accessing your work is easy! Load SketchUp models from 3D Warehouse, Trimble Connect, Dropbox, email attachments, or even a folder on your device.



### Tell the full story

Use native SketchUp Scenes and Layers to build a narrative. Present multiple design options, construction phases, and additional project details.



### Poetry in motion

Create a virtual tour of your project, tailoring the camera's field of view and speed. You control the viewing experience with SketchUp animations.



## Immerse yourself in VR

Engage colleagues and clients in an experiential design review: a rich and powerful way to evaluate, coordinate, and communicate your design intent.



### Perceive space

Understand a project better—both its challenges and successes. Get a real feel of how a space will work well before construction begins.



### Create a narrative

Use native SketchUp Scenes and Layers to tell the full story. Present multiple design options, construction phases, and additional project details.



### Multi-user collaboration

Host sessions with multiple collaborators located anywhere in the world. Present your design and talk stakeholders through complex spaces more easily.



### Choose your weapon

SketchUp Viewer for VR is available for Oculus Rift, HTC Vive and Vive Pro headsets as part of the SketchUp Pro annual termed subscription.



### Simple navigation

View your designs as virtual scale models, or step inside and walk around your creation at 1:1. Teleport quickly to any location in larger models.



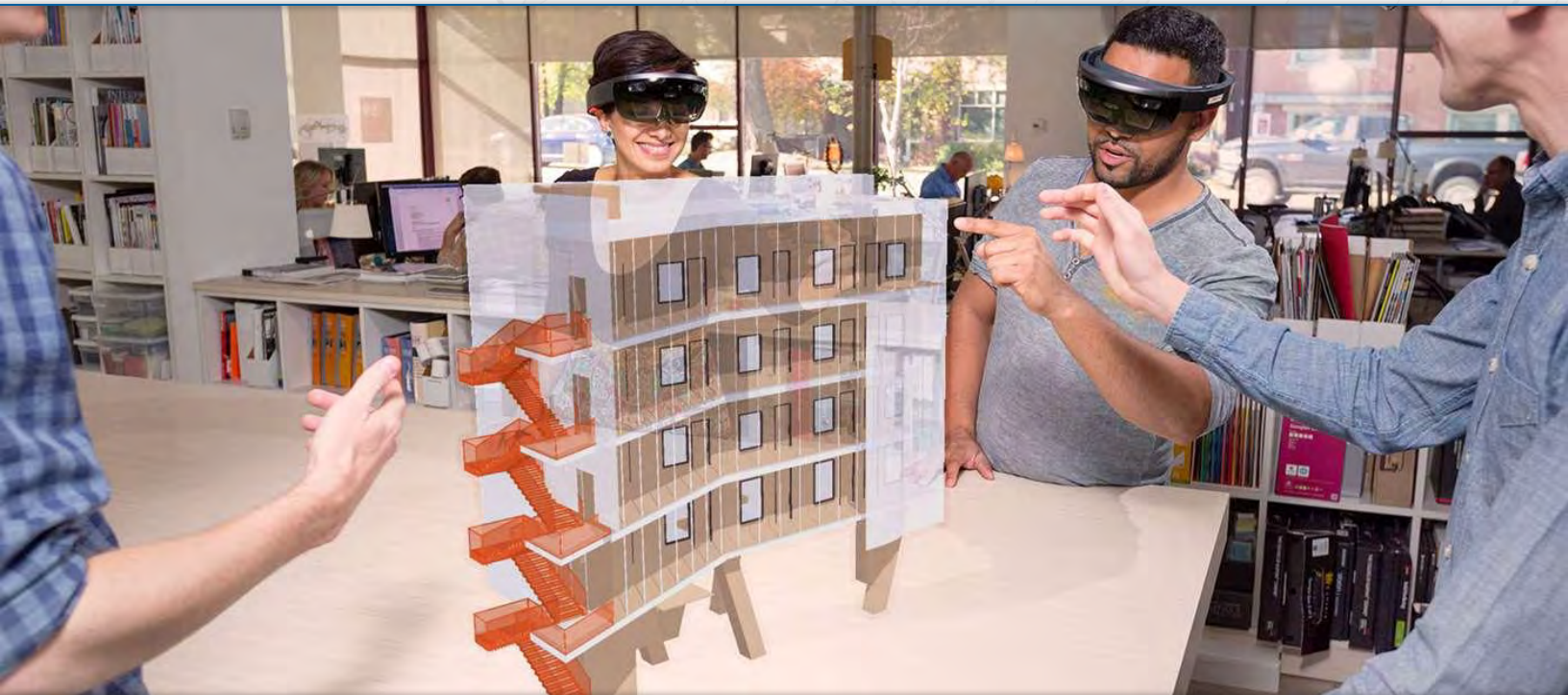
### Sightlines? Sorted

Need to review a project within context? No problem! Carry out line of sight studies with realistic points of view and variable eye-height.



## Experience your designs

Bring 3D models to life in mixed reality. Step into a powerful new way to explore, understand, and share your work with Microsoft HoloLens.



## Bring your work to life

Save time and enable faster design decisions by visualizing projects in mixed reality. View designs as a tabletop model or be fully immersed at 1:1 scale.



### Models in context

Avoid a last minute surprise. Bring holographic models to site and see first-hand how designs will materialize with real-world surroundings.



### Experience your design

You drew the concept but have you seen it from every angle? Visualise a space with full-scale immersion and solve problems before breaking ground.



### See the detail

With access to key features, such as the Tape Measure and Entity Info, important and relevant information is (virtually) at your fingertips.



### Rapid iterations

Physical models cost time and money. Conversely, mixed reality models in SketchUp can be amended and scaled in an instant.



### Collaborate

Launch a co-located collaboration session with live audio. See where others look, and solve complex spatial issues as a team.



### Coordinate

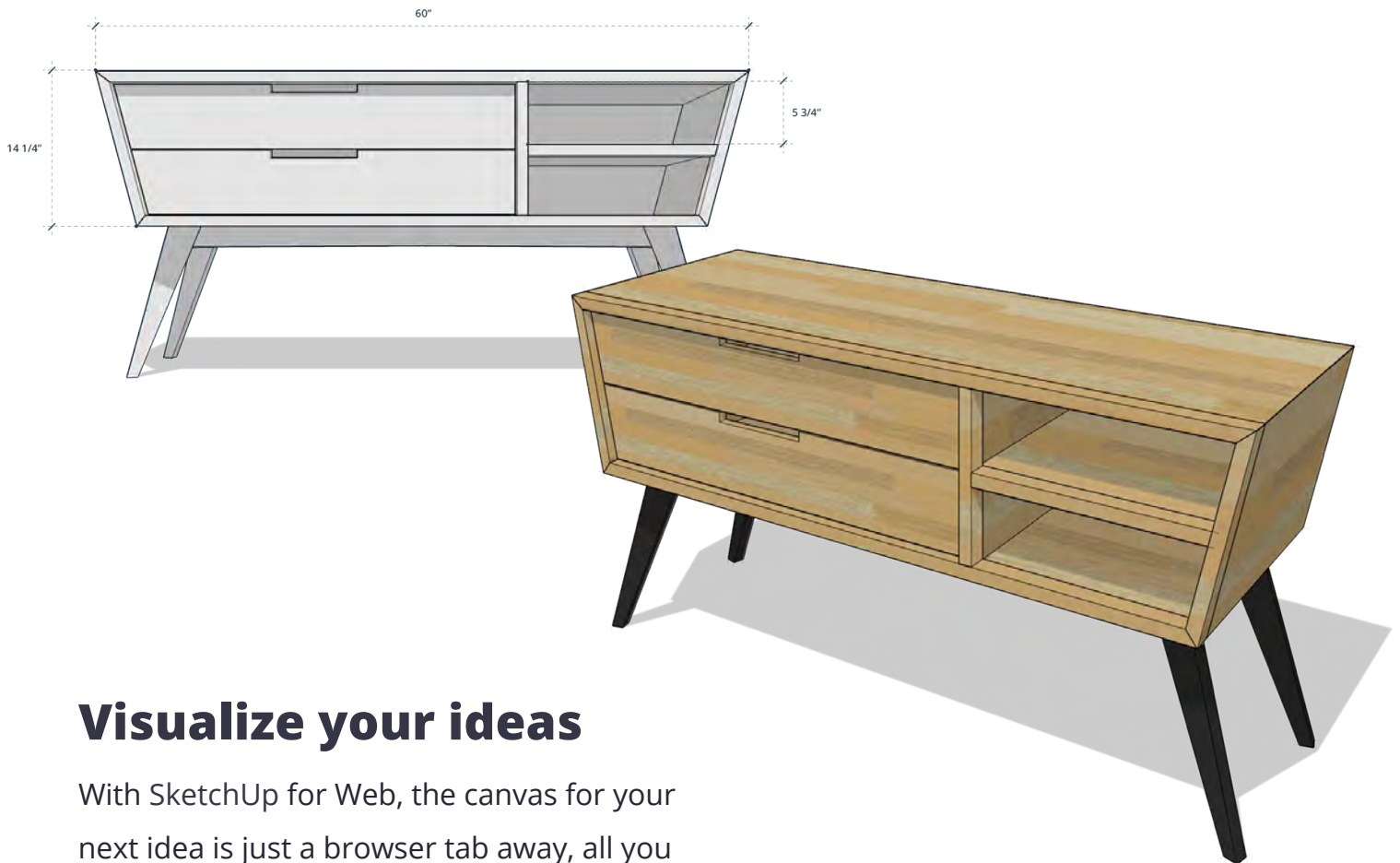
Smoothly navigate key spaces in mixed reality by selecting preset scenes and focus the conversation by toggling on-and-off model layers.





## A Maker's dream

The tool that every woodworking, 3D printing, and DIY project needs. Quickly iterate ideas and virtually construct designs with in-browser 3D modeling.



## Visualize your ideas

With SketchUp for Web, the canvas for your next idea is just a browser tab away, all you need to get going is an internet connection.

### **Model right away**

Begin your next 3D project in three short steps:

1. Open your browser
2. Launch SketchUp
3. Get creative!

### **Mobile model viewing**

View 3D models on mobile devices, complete with scenes and animations. Virtually place objects into real-world context with Augmented Reality tools.

### **Browser ready**

Design on the move from within your favourite web browser. Start modeling on macOS, Windows and Linux desktop devices.

### **Share and collaborate**

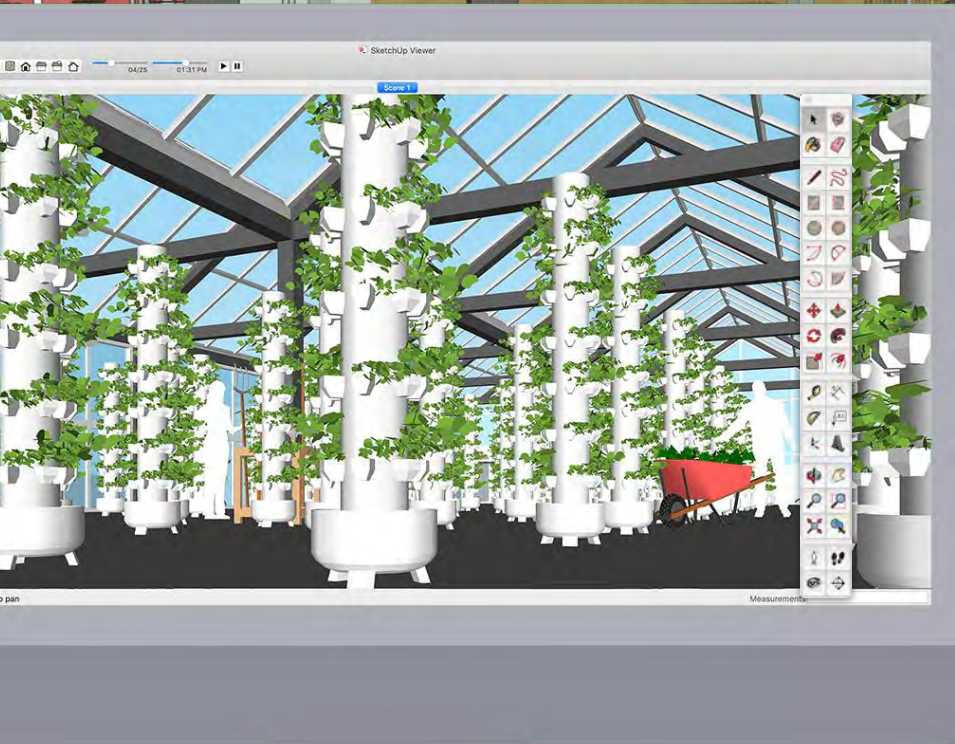
With cloud storage and collaboration enabled by Trimble Connect, multiple team members can review, comment, and assign tasks.

### **Always up-to-date**

With SketchUp for Web, you always use our fastest, up-to-date iteration. Access the latest features as soon as they're released.

### **Interoperability**

Need to work in other applications? No problem, you can import and export the most popular 3D, 2D, image, and CAD files.



## Customize your toolbox

Add new tools and features directly into SketchUp with hundreds of apps for rendering, drawing, productivity, energy analysis, and more.



## Optimize your workflow

Browse our extensive library of third-party extensions developed to customize and enhance your modeling workflow.

Extension Warehouse contains over 750 free and paid apps.



### Apps on demand

Extension Warehouse is fully integrated with SketchUp Pro. You can download, install, and manage the apps you need from within the desktop client.



### Designed for you

Many extensions solve specific drawing pain points or improve industry-specific workflows. Whatever you require, you'll find an app to get the job done.



### Future proof

Teams of developers are constantly creating new ways to hack your workflow, boost productivity, and help you generate upgraded outputs.



### Real or render?

Photorealistic renderings are just an extension away. Select from a wide range of rendering engines to suit your budget and bring your models to life in a new way.



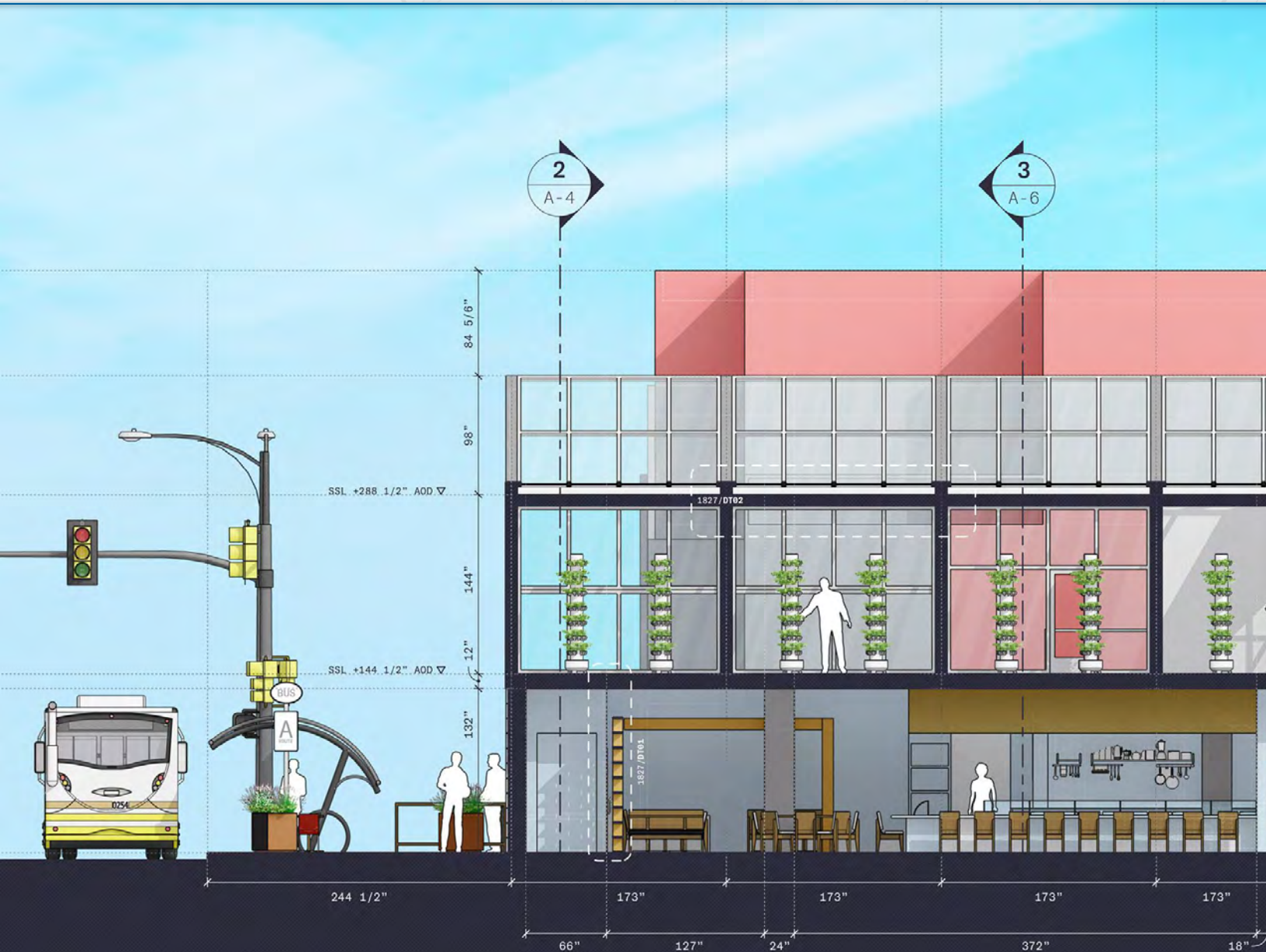
### Level up your skills

Model anything in just a couple of clicks — from rounded corners to pipes and windows. There are hundreds of productivity extensions to automate steps.



### 3D printing

Choose an extension that helps you model from scratch, or clean up existing projects for transition from screen to 3D printer.



## From 3D model to 2D drawings

Translate true design intent with ease. Combine SketchUp models with text and 2D vector illustrations for beautiful presentations and construction documents.



## Communicate clearly

Scale your model to the paper space and add the context needed to move your project forward. The best part? When your 3D model changes, so do your 2D documents.

### Display the details

Present design details, materials and construction workflows. Use LayOut to ensure your drawings truly communicate your intent.

### Draw to scale

Quickly and easily produce accurate documentation from 3D models at any scale. Combine site plans and construction details in a single document.

### Get labelled

Automatically display relevant information from data within your 3D model. Annotate presentations with pricing, links, and IFC tags.

### Custom title blocks

Make drawing sets your own with customized title block templates for use across all documents and presentations. Maintaining your brand just got that much easier.

### Present options

Make pivotal design decisions faster and cover all the angles. Gather multiple design options and iterations in one place for rapid stakeholder review.

### Associative dimensions

Need to make changes to your model? No problem! At the click of a button LayOut will update dimensions and labels to match any changes in model geometry.



## Access millions of free models

Instantly add entourage and context to your project with free models from 3D Warehouse, the world's largest and most popular 3D library.



## Explore a vast 3D library

Need a chair, fern, or unique material? Join the 31 million users each year who find, upload and share almost anything in the world's most popular free 3D model library.



### Discover anything

Need to furnish an interior or street scene? Don't model everything yourself! Discover pre-built models of virtually anything, ready for import.



### Real-world products

Browse thousands of real-world products from recognized brands. Specify ready-to-buy appliances, furniture, floor coverings, and building materials.



### Get sharing

We know you're proud of what you create in SketchUp. You should be! Share models with the community and inspire others with your designs.



### Advanced search

Trouble finding what you're looking for? Use advanced search and filters to narrow down the field and find the ideal model for your needs.



### Product placement

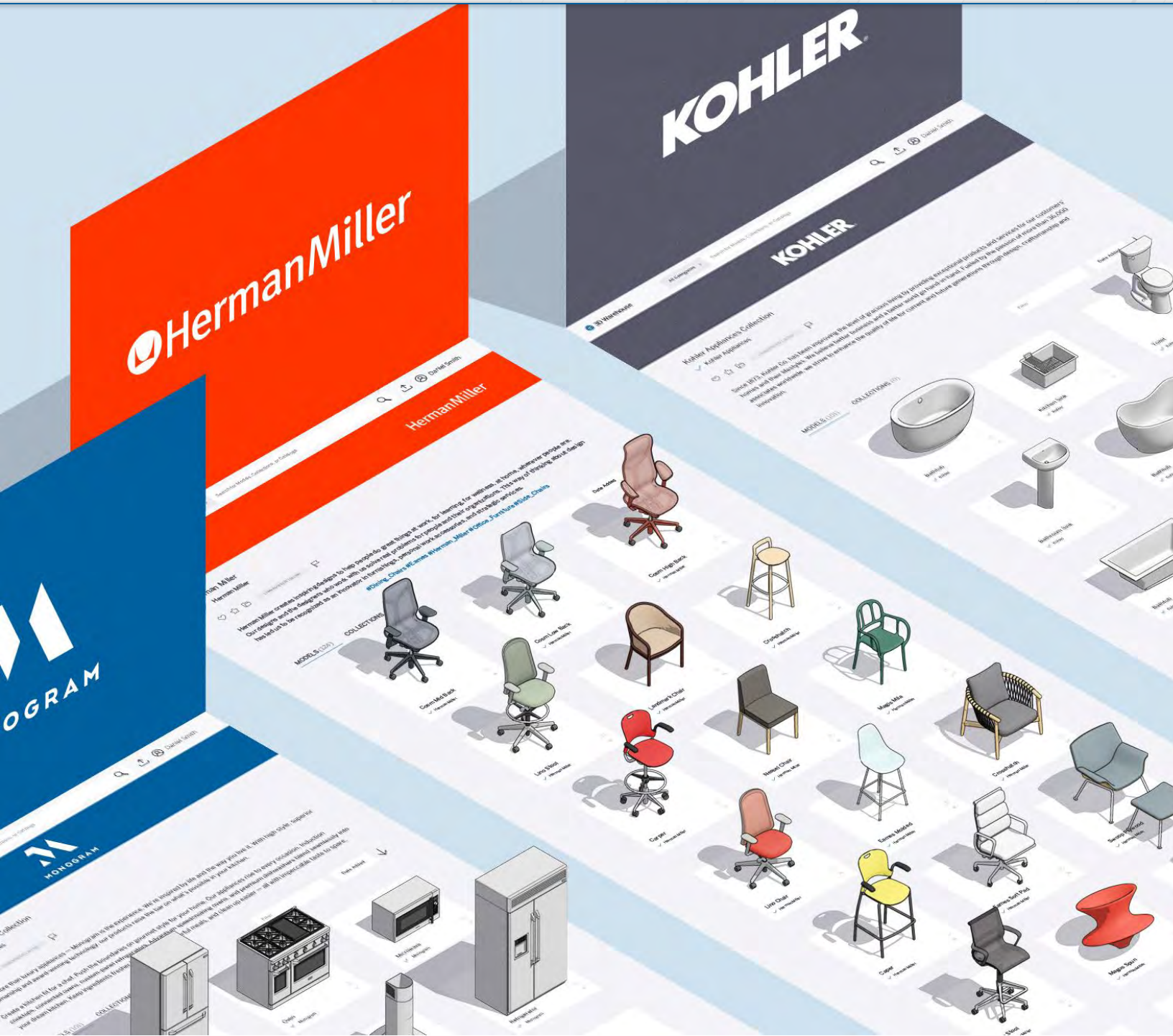
Have a product others might want to buy? Increase brand awareness and generate leads by placing your product in front of millions of potential buyers.



### Seamless flow

3D Warehouse is fully integrated with SketchUp. Move at a swift pace by importing models directly into a project from within the app.





# Your digital showroom awaits

Increase brand awareness and generate leads by showcasing your products to millions of design professionals.



## Showcase your products to a vast professional audience

Millions of professional designers and architects source products in 3D Warehouse every year. Your digital showroom allows you to present the right content, to the right audience, at the right time.



### Application Coverage

SketchUp models can be imported by every major CAD program.



### Download volume

Over one million models downloaded from 3D Warehouse daily.



### Audience

More than a million Architecture & Design professionals per month.



### Visibility

New downloadable file formats including GLTF to make AR a reality.



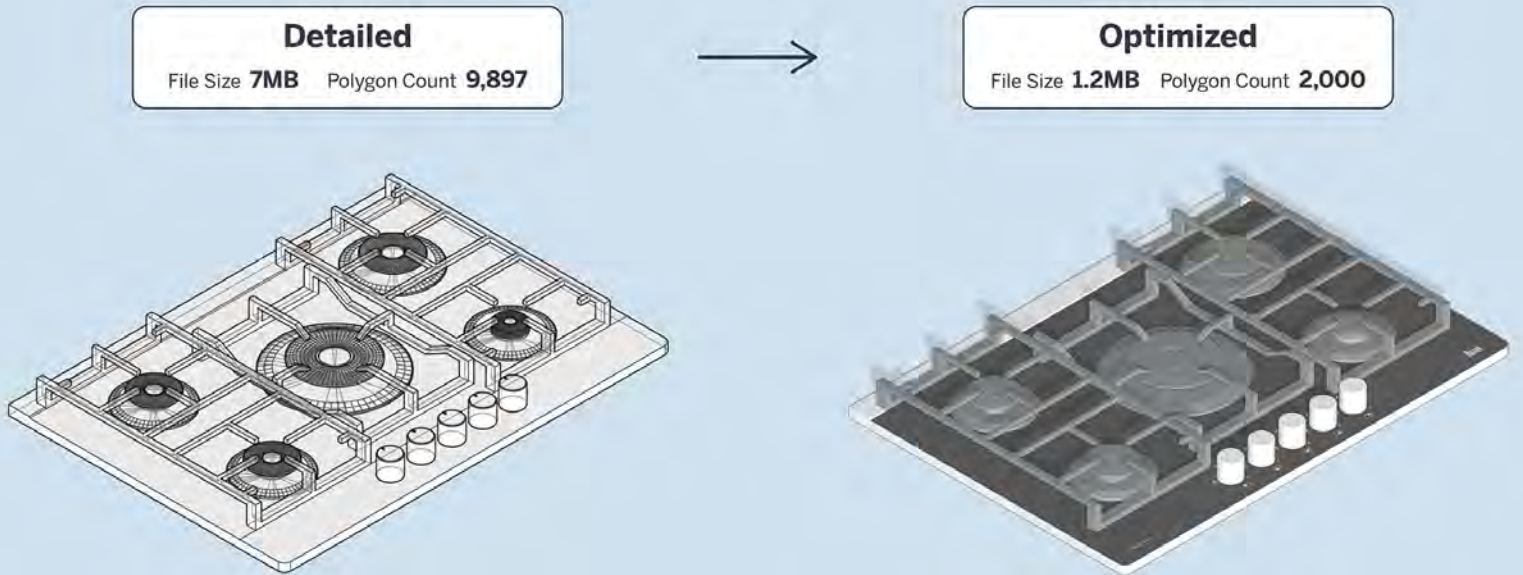
### Performance analytics

Access crucial content performance data and analytics.



### Cost-effective

Access all the benefits and get started with your digital showroom for free.



## Optimize your content for success

Here are some best practices to get you off on the right (modeling) foot. Populate your showroom with models that architects and designers can use in their projects.



### Simple

Keep things simple by leaving out extra-fine details in your models. They don't need to be complex, engineering drawings.



### Coherent

Present all your products in a consistent and unified manner. You'll put your best foot forward and keep your brand top-of-mind.



### Accurate

Ensure your models are accurately dimensioned. Users will be populating their architectural designs with these so accuracy is a must.



### Data Rich

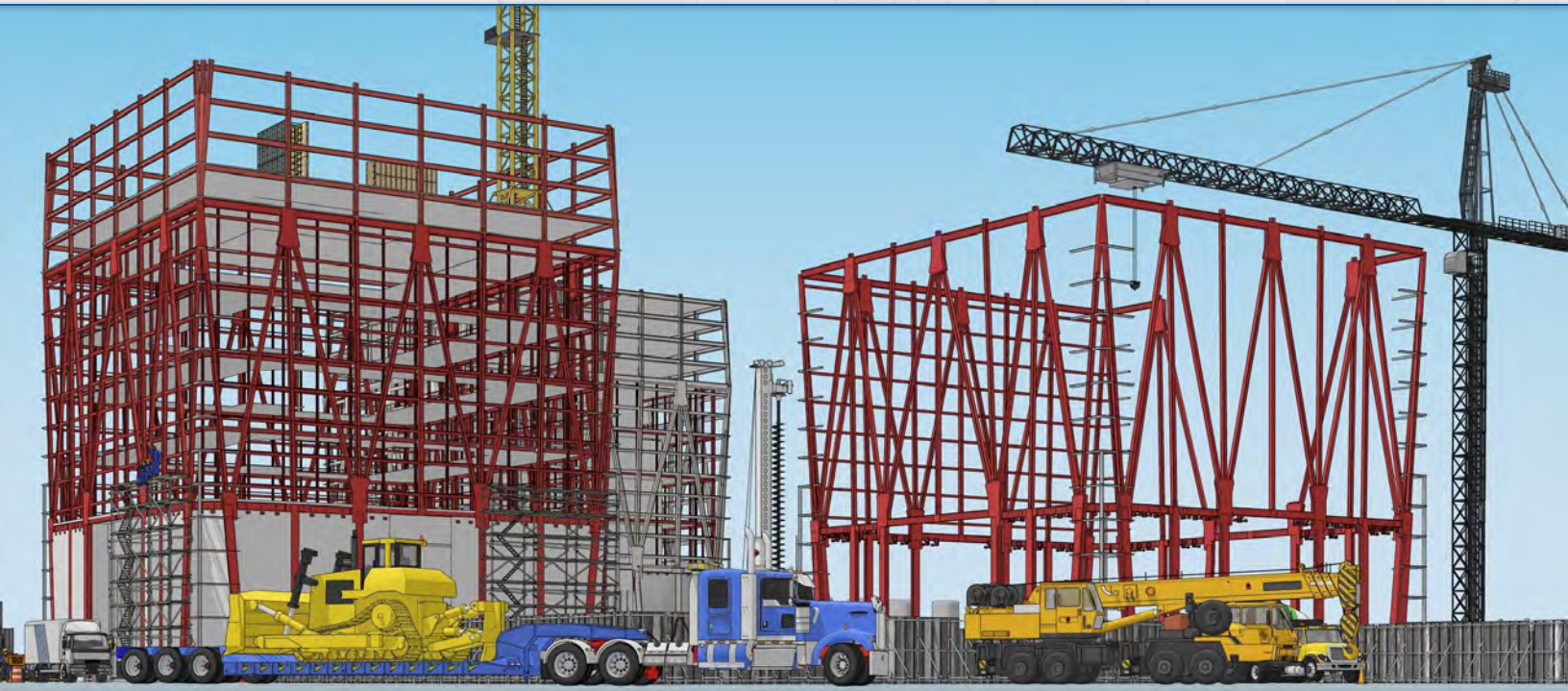
Add descriptions, images, categories, dimensions, classifications, and links to help designers find and spec your products.



### Content Services

Need help developing your 3D catalog? Our team of content development experts can advise you on strategies to meet your marketing goals and optimize your content for maximum return on investment.

Contact us for more info at [3dwarehouse.sketchup.com](https://3dwarehouse.sketchup.com)



## Ready to get started?

Contact us through our sales form on [3Dwarehouse.sketchup.com](https://3Dwarehouse.sketchup.com) to get started with the largest 3D model library in the world.

### Connect with us

Line: @8baht

